

Year 7 SITS – Dramatic Elements Task 2

Name: \_\_\_\_\_

Learning Family: \_\_\_\_\_

Date: \_\_\_\_\_

1. Match the following terms with their correct meanings.

Role	The connections and interactions between people.
Situation	Sense of anticipation or conflict within characters or character relationships.
Place	Directing and intensifying attention and framing moments of dramatic action.
Language	The setting and circumstances of the dramatic action – the who, what, where, when and what is at stake of the roles/characters.
Relationship	A type or stereotype of a group of people, animal or object.
Focus	Fictional time in the narrative or setting.
Character	The fictional place in the story or setting that the action occurs in.
Time	A detailed and specific portrayal of a character, animal or object.
Tension	The choice of linguistic expression and ideas in drama used to create dramatic action.

2. Label the following with a “T” for True or a “F” for false.

Gesture is a physical skill. \_\_\_\_\_ Gait is not a vocal skill. \_\_\_\_\_ Tone is a physical skill. \_\_\_\_\_

Intonation is a vocal skill. \_\_\_\_\_ Pitch is a physical skill. \_\_\_\_\_ Pause is a physical skill \_\_\_\_\_

3. Tick the correct answer.

To be able to show that a character is scared I must use a...

Gesture by clenching my fists  Gait by skipping  High Pitch Voice

4. The picture is an example of what physical skill

- A) Intonation
- B) Proxemics
- C) Pace
- D) Facial Expression

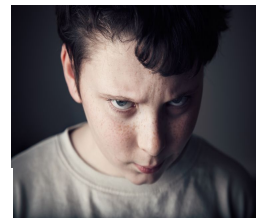


5. Tick two examples of an angry facial expression.



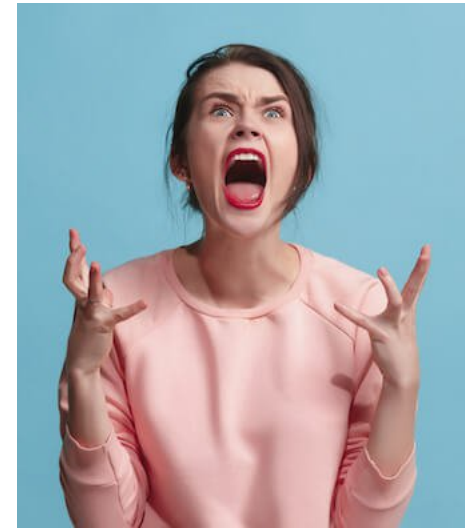







6. List the physical skills used by the actor to show anger.

Challenge: Describe how she uses them




---



---

7. Describe and explain how you have used body movement and volume to create and perform the dramatic element of place.

---



---



---